

Welcome

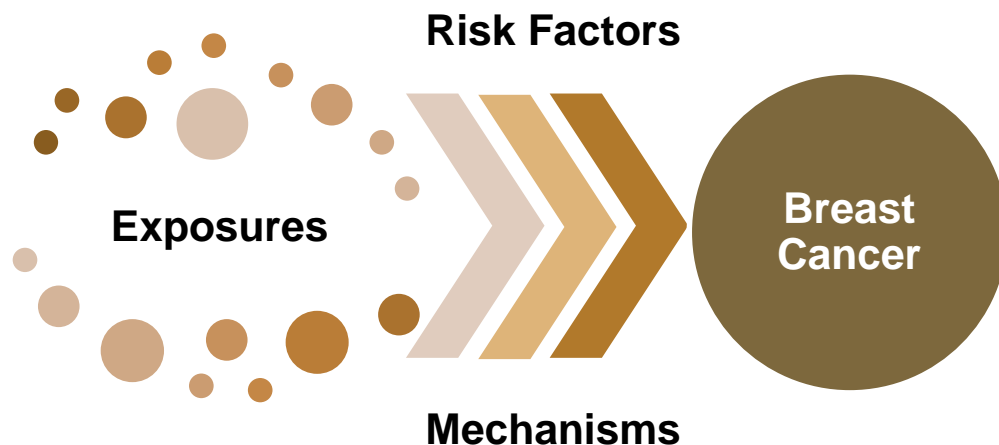
**Tram Kim Lam, Ph.D., M.P.H. & Abee L. Boyles, Ph.D.
Program Directors, Breast Cancer & the Environment
Research Program**

**National Cancer Institute &
National Institute of Environmental Health Sciences**



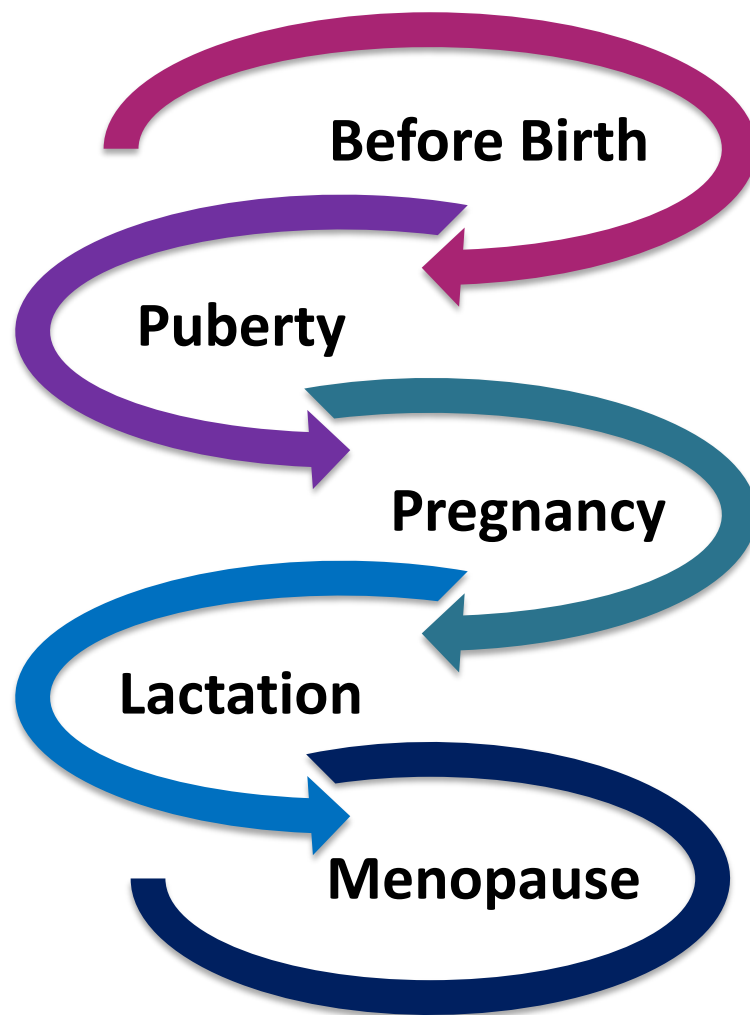
Key Questions of BCERP

- Which classes of environmental exposures increase breast cancer risk?
- What are the underlying mechanisms linking environmental exposure at different life stages and breast cancer?
- How do genetics, social and lifestyle factors interact with environmental exposures to influence risk?
- What are possible strategies for prevention based on research findings?
- How can findings be best translated into effective risk messages?



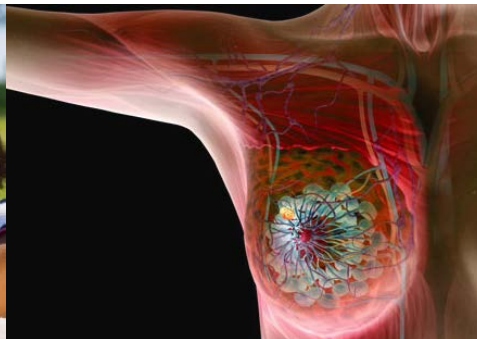
Windows of Susceptibility for Breast Cancer during a Woman's Lifecycle

- The female breast undergoes many changes over the course of a lifetime.
- Although these changes may seem to occur gradually, there are specific time periods when more rapid changes take place.
- The physiological changes that occur during these distinct time periods may make breast cells more vulnerable. These time periods when the breast may be more at risk are known as windows of susceptibility.



BCERP Goals

- Enhance research on environmental and genetic factors underlying breast cancer risk over the lifespans of women
 - Windows of Susceptibility (WOS) focus
 - Transdisciplinary approach
- Advance breast cancer prevention
 - Engage communities to disseminate new research findings to girls and women at risk



BCERP Focus and Structure

- **6 Transdisciplinary Research Projects**

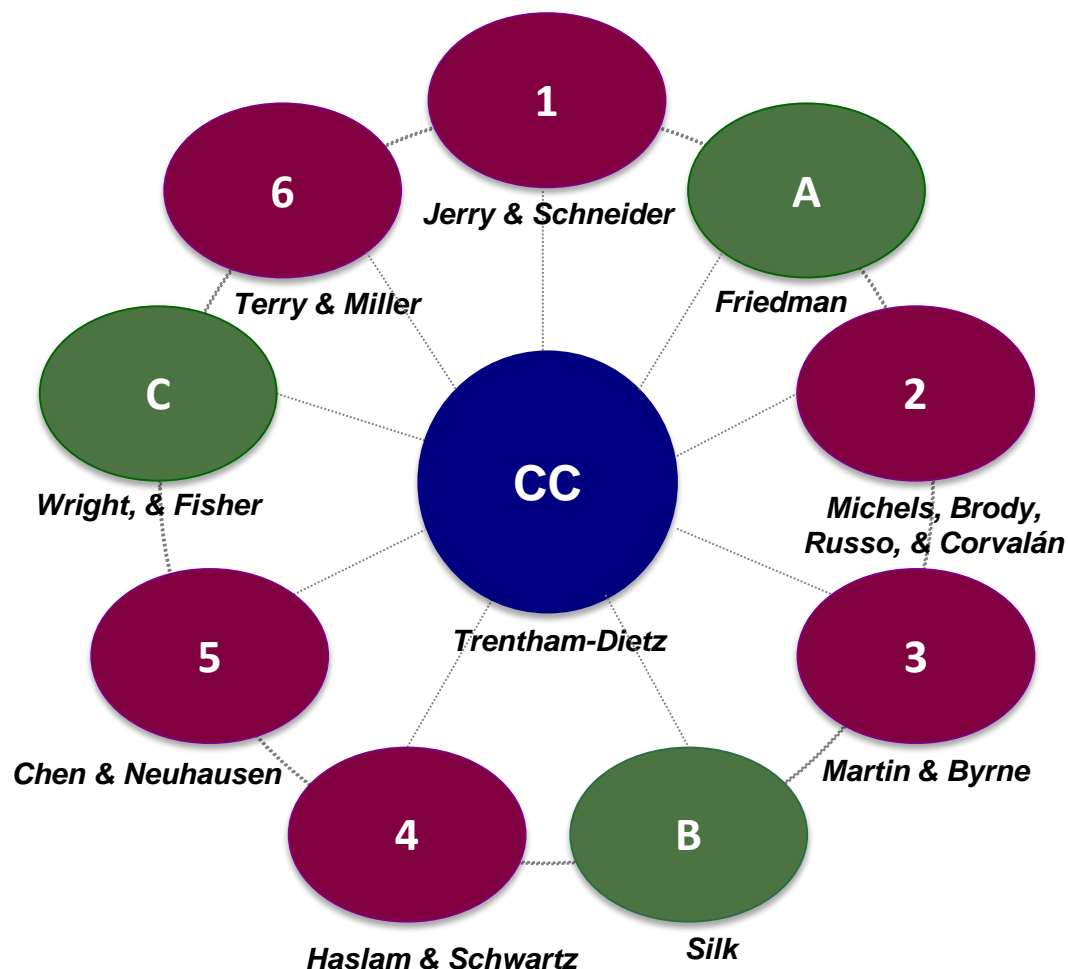
- Basic science
- Human/epidemiologic study
- Community engagement

- **3 Communications Research Projects**

- 2 dissemination
- 1 implementation

- **Coordinating Center (CC)**

- Intellectual leadership
- Cross-BCERP collaborations



Core Values for the Consortium

- Sharing ideas and resources across projects
- Fostering collaborations
- Ensuring everyone has a voice
- Valuing unique expertise and contributions
- Building trusting relationships with each other
- "Bringing our best" to the table



Consortium Activities

- Collaboration
- Data Sharing
 - Preliminary findings with BCERP Consortium
 - Common resources
 - Meta-data
- Meetings
 - Annual PD/PI scientific meetings
 - Monthly committee calls



Purpose of Annual Meeting

1. Identify opportunities for collaboration in support of BCERP's goal to define the state-of-the-art for the transdisciplinary science of breast cancer and the environment
2. Maintain a tone for the consortium that fosters trust, collaboration, and inclusion

Keynote Speaker

- Linda S. Birnbaum, Ph.D., D.A.B.T., A.T.S.
 - Director of the National Institute of Environmental Health Sciences (NIEHS)
 - Director of the National Toxicology Program (NTP)

